

We Build a Better Future

HLF 20/25/30C-5

CERES SYSTEM

CERES(Construction Equipment Resource Support) is HHI's new information system on all Hyundai construction equipment for our overseas dealers and branch offices.

<http://ceres.hhi.co.kr>

※Optional items :

- Full free stage mast (duplex & triplex)
- Cabin & Heater
- Electronic Beacon
- Hazard Switch
- Emergency Warning
- Seat
 - Seat Belt
 - Arm rest
 - Hip Restraint
- MCV : 4 Spools
- Master Switch
- Rear Work Lamp
- Hose - reel
- Fork : 900, 1000, 1200, 1350, 1500, 1650, 1800 mm
- Over Shoes : 1300, 1500, 1700, 1800 mm
- Various Attachments
 - Load Stabilizer, Push Pull, Hinged Fork, Hinged Bucket,
 - Load Extender, Fork Positioner, Bale Clamp,
 - Carton Clamp, Pallet Invert, Drum Clamp,
 - Rotating Roll Clamp, Rotating Fork, Side Shift

※ Hyundai is continuously upgrading and improving its products. It therefore reserves the right to supply products, which may differ slightly from description and illustration in this catalog. For further information on options, consult with Hyundai's dealer. Specifications are subject to change without notice.

 **HYUNDAI**
HEAVY INDUSTRIES CO.,LTD.
CONSTRUCTION EQUIPMENT DIVISION

HEAD OFFICE 1 CHEONHA - DONG, DONG-KU, ULSAN, KOREA
(Sales Office) TEL : (82)(52)230-7970, 7729 FAX:(82)(52)230-7979, 7720
U.S. Operation Hyundai Construction Equipment U.S.A., Inc.
955 ESTES AVENUE ELK GROVE VILLAGE IL. 60007
TEL : (1)847 - 437 - 3333 FAX : (1)847 - 437 - 3574
European Operation Hyundai Construction Equipment Europe N.V.
VOSSENDAAL 11, 2440 GEEL, BELGIUM
TEL : (32)14 - 562200 FAX : (32)14 - 593405 - 06

PLEASE CONTACT

www.hyundai-ce.com

2004. 07 Rev 0.

 Building a better future
Global Leader

www.hyundai-ce.com

NEW HLF 20/25/30C-5 Cushion tire

- 2,000kg (4,000 lb)
- 2,500kg (5,000 lb)
- 3,000kg (6,000 lb)

Tier II Engine



 **HYUNDAI**
HEAVY INDUSTRIES CO.,LTD.

■ Photo may include optional equipment.

The HLF 5 Series

Designed with a durable frame and built to offer excellent stability and a smooth ride, HLF 5 Series trucks are real workhorses.

From external or internal loading and unloading of trucks and containers to yard work for the construction industry, whatever requirement arise, you can count on HLF 5 Series truck to lift your business to greater heights.



MITSUBISHI 4G64 ENGINE

50 ps/ 2,500 rpm

High Efficient Engine

The powerful, proven Mitsubishi 4G64 engine guarantees superior performance.

The 4G64 engine is a 2.4 liter, overhead cam engine producing 50hp.

It is UL certified, and features an IMPCO LPG system and an electronic ignition.

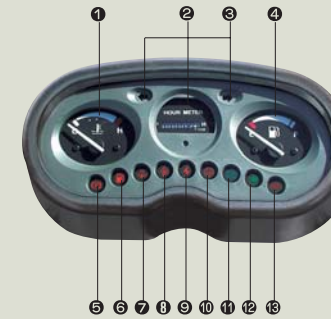
This engine is EPA Tier II & CARB(California Air Resources Board) compliant.



Superior Power & High Performance

Smooth running, efficient and ergonomically designed, HLF20/25/30C-5 series are made to meet your needs.

Concentrated instrument panel



- ① Water temperature gauge
- ② Hour meter
- ③ Directional indicators
- ④ Fuel gauge
- ⑤ Parking lamp(Optional)
- ⑥ Fuel warning lamp
- ⑦ Engine oil warning lamp
- ⑧ Transmission oil temperature warning lamp
- ⑨ Battery charging warning lamp
- ⑩ Air cleaner filter warning light
- ⑪ Headlight indicator
- ⑫ Working light indicator
- ⑬ Pre-heater indicator



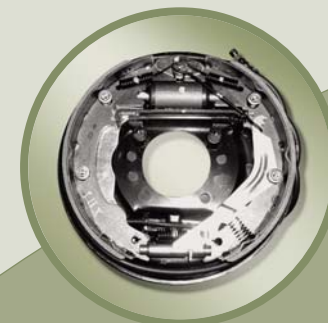
The new style HLF20/25/30C-5



Fork safety features

When the forks are being lowered, a down-control valve maintains a controlled speed.

The down-safety valve prevents from forks from dropping down in case of sudden damage of hydraulic line.



Clean and reliable brakes

The adoption of DUO-SERVO automotive type drum brake improves braking performance. A self-adjusting function maintains proper brake adjustment to compensate for lining wear.



Increased mast tilting angle

Utilizing the mast tilting angle of 6 degrees forward and 10 degrees backward, the operator can rapidly perform loading and unloading jobs safely.



Gradeability (MAX)

- HLF20C-5 38.5%
- HLF25C-5 32.6%
- HLF30C-5 27.3%



Faster travel speed & gradeability

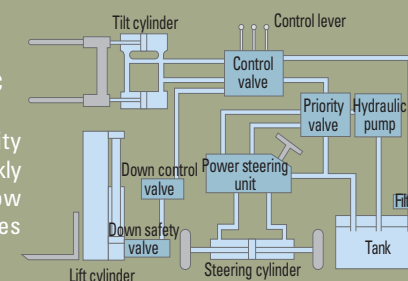
The powerful high-output engine provides greater acceleration, better gradeability and faster travel speed on any tough terrain or slope.

Travel speed (MAX)

- HLF20C-5 16.8 km/h (10.4mph)
- HLF25C-5 16.8 km/h (10.4mph)
- HLF30C-5 16.7 km/h (10.4mph)

State-of-the-art hydraulic system

The latest large-capacity hydraulic system reacts quickly during operation, and a low noise control valve increases both efficiency and durability.



Perfect fit

An ergonomically designed operator's compartment enables the driver to select the most comfortable working position for increased productivity.



Easy on/off access

Low integral steps on both sides of the truck and a contoured, rubber-coated grip ensure easy access to the operator's seat.



Comfortable Operation

A design based on human engineering relieves fatigue and enhances operating performance.



Easily adjustable full suspension seat

An attractive and adjustable seat, based on a human engineering design, provides great comfort, safety and durability.



Adjustable steering wheel

Steering wheel can be adjusted by a lever on the right-hand side for the most comfortable operator position.



Parking brake

Toggle type parking brake requires less efforts from the operator to set.



Optimum pedal position

Based on human engineering, the accelerator, brake and inching pedals are optimally positioned for convenience while driving the equipment.



Prompt response of operating control levers

Only minimal operator's effort is required for precise, safe and productive control.



Cup holder & console box

Additional storage spaces are located for operator's convenience.



Strong overhead guard

The safety overhead guard meets EEC and ANSI regulations and protects the operator during hazardous work.



Easy control transmission lever

Finger tip control of forward and reverse lever allows the operator to remain in control of equipment.



Multi-functional switch

Integrated multi-functional switch lever enable the driver to operate lights and horn conveniently.

New high visibility for safe operation

The operator is able to work with increased safety and accuracy due to a wider view mast.





High Durability & Easy Maintenance

An ideal arrangement of component parts ensures easy access and convenience for maintenance.



Master switch (option)
A master switch, which completely turns equipment on and off, prevents accidents, which might be caused by unauthorized use of the equipment.



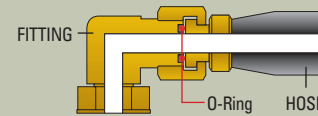
Smooth steering
Installation of the port in the steering line makes it possible to measure and adjust of the steering pressure.



Large footboard
Wide "open" step offers convenience and safety when entering and exiting truck.

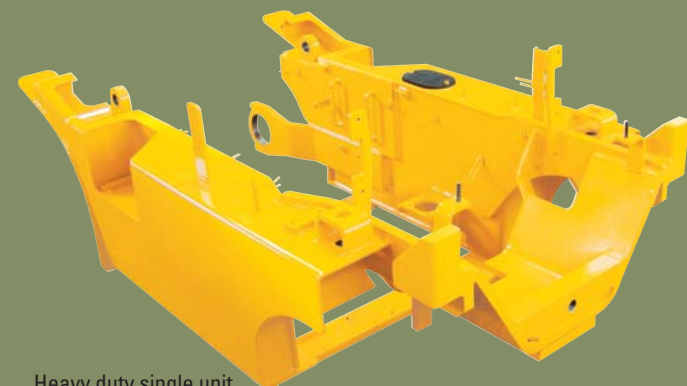


Rear safety lamp
Rear combination lamps with directional indicators, rear lights and brake lights are positioned for a high level of safety.



ORFS (O-Ring Face Seal)
ORFS type hose prevents the leaking of hydraulic oil.

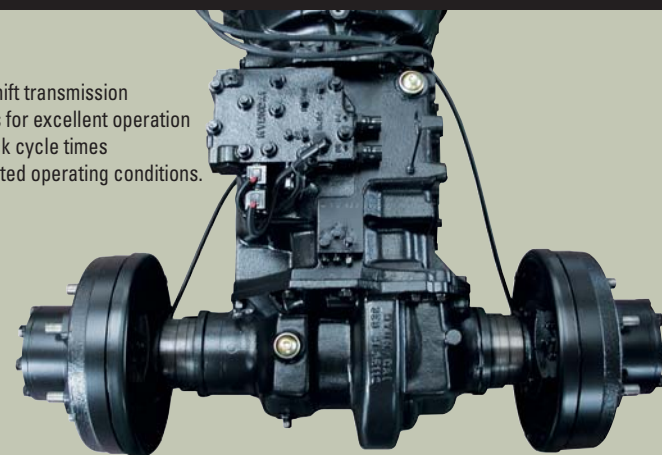
Heavy duty single unit frame



Heavy duty single unit type frame, designed on the basis of accurate structural analysis, guarantees durability and safety.

Highly durable electric shift - power transmission

Powershift transmission provides for excellent operation and quick cycle times under rated operating conditions.



Engine hood for easy access

Full opening engine hood with self-locking gas spring enables easy access for repair and maintenance. Easy starter and air cleaner access.



Large air cleaner filter



Easy-to-access reservoir tank



A concentrated fuse box for easy inspection



Maintenance free battery



Easy-to-change radiator

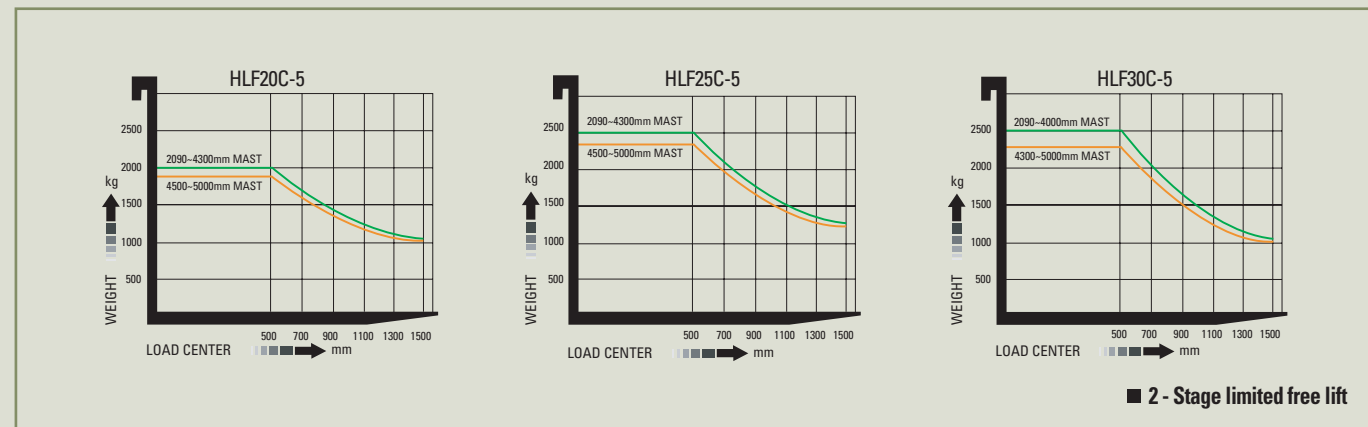


High intensive headlight and rear light

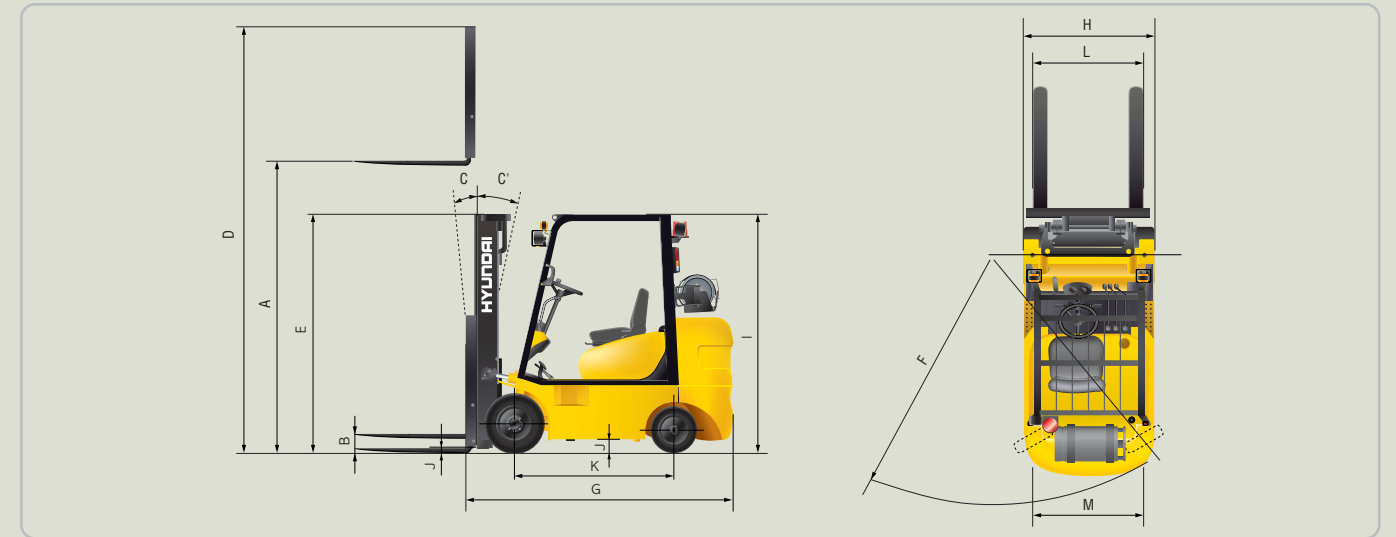
Mast Specification

Mast Type	Maximum Fork Height	Overall Height				Free Lift				Tilt Angle		Load Capacity at 500mm LC(24 in LC)		
		Lowered	Extended		Without Load Backrest		With Std Load Backrest							
			mm(in)	W/D Load Backrest	W/Std Load Backrest	mm(in)	mm(in)	mm(in)	mm(in)	Fwd	Bwd	kg(lb)		
		mm(in)	mm(in)	mm(in)	mm(in)	mm(in)	mm(in)	mm(in)	mm(in)	deg	deg	HLF20C-5	HLF25C-5	HLF30C-5
V209	2090 (82.3)	1530 (60.2)	2677 (105.4)	2740 (107.9)	3275 (128.9)	115 (4.5)	115 (4.5)	115 (4.5)	115 (4.5)	10	6	2000 (4000)	2500 (5000)	3000 (6000)
V300	3000 (118.1)	1985 (78.1)	3587 (141.2)	3650 (143.7)	4185 (164.8)	115 (4.5)	115 (4.5)	115 (4.5)	115 (4.5)	6	10	2000 (4000)	2500 (5000)	3000 (6000)
V330	3300 (129.9)	2135 (84.0)	3887 (153.0)	3950 (155.5)	4485 (176.6)	115 (4.5)	115 (4.5)	115 (4.5)	115 (4.5)	6	10	2000 (4000)	2500 (5000)	3000 (6000)
V350	3500 (137.8)	2235 (87.9)	4087 (160.9)	4150 (163.4)	4685 (184.4)	115 (4.5)	115 (4.5)	115 (4.5)	115 (4.5)	6	10	2000 (4000)	2500 (5000)	3000 (6000)
V370	3700 (145.7)	2385 (93.9)	4287 (168.8)	4350 (171.2)	4885 (192.3)	115 (4.5)	115 (4.5)	115 (4.5)	115 (4.5)	6	10	2000 (4000)	2500 (5000)	3000 (6000)
V400	4000 (157.4)	2535 (99.8)	4587 (180.6)	4650 (183.1)	5185 (204.1)	115 (4.5)	115 (4.5)	115 (4.5)	115 (4.5)	6	10	2000 (4000)	2500 (5000)	3000 (6000)
V430	4300 (169.3)	2685 (105.7)	4887 (192.4)	4950 (194.9)	5485 (215.9)	115 (4.5)	115 (4.5)	115 (4.5)	115 (4.5)	6	10	2000 (4000)	2500 (5000)	2950 (6000)
V450	4500 (177.2)	2835 (111.6)	5087 (200.3)	5150 (202.7)	5685 (223.8)	115 (4.5)	115 (4.5)	115 (4.5)	115 (4.5)	6	5	1950 (4000)	2450 (5000)	2900 (6000)
V470	4700 (185.0)	2935 (115.5)	5287 (208.1)	5350 (210.6)	5885 (231.7)	115 (4.5)	115 (4.5)	115 (4.5)	115 (4.5)	6	5	1900 (3900)	2400 (4900)	2850 (5830)
V500	5000 (196.9)	3085 (121.4)	5587 (220.0)	5650 (222.4)	6185 (243.5)	115 (4.5)	115 (4.5)	115 (4.5)	115 (4.5)	6	5	1850 (3850)	2350 (4850)	2800 (5720)
TF370	3700 (145.7)	1785 (70.3)	4313 (169.8)	4376 (172.3)	4885 (192.3)	1177 (46.3)	1114 (43.8)	605 (23.8)	798 (31.4)	6	5	2000 (4000)	2500 (5000)	3000 (6000)
TF400	4000 (157.4)	1885 (74.2)	4613 (181.6)	4721 (185.9)	5230 (205.9)	1277 (50.3)	1214 (47.8)	705 (27.8)	898 (35.3)	6	5	1950 (4000)	2450 (5000)	2900 (6000)
TF430	4300 (169.3)	1985 (78.2)	4913 (193.4)	5021 (197.7)	5530 (217.7)	1377 (54.2)	1314 (51.7)	805 (31.7)	998 (39.3)	6	5	1900 (3900)	2400 (4900)	2850 (5830)
TF450	4500 (177.2)	2085 (82.1)	5113 (201.3)	5176 (203.7)	5685 (223.8)	1477 (58.1)	1414 (55.7)	905 (35.6)	1098 (43.2)	6	5	1850 (3850)	2350 (4850)	2800 (5720)
TF470	4700 (185.0)	2135 (84.1)	5313 (209.2)	5412 (213.4)	5930 (233.5)	1527 (60.1)	1464 (57.6)	955 (37.6)	1148 (45.2)	6	5	1800 (3800)	2300 (4800)	2750 (5610)
TF500	5000 (196.9)	2235 (87.9)	5613 (221.0)	5676 (223.5)	6185 (243.5)	1627 (64.1)	1564 (61.6)	1055 (41.5)	1248 (49.1)	6	5	1750 (3700)	2050 (4200)	2700 (5500)
TF550	5500 (216.5)	2435 (95.9)	6113 (240.7)	6176 (243.1)	6685 (263.2)	1827 (71.9)	1764 (69.4)	1255 (49.4)	1448 (57.0)	6	5	1450 (3000)	1650 (3300)	1950 (3960)
TF600	6000 (236.2)	2635 (103.7)	6613 (260.3)	6676 (262.8)	7185 (282.9)	2027 (79.8)	1964 (77.3)	1455 (57.3)	1648 (64.9)	6	5	1050 (2300)	1100 (2300)	1400 (2860)
TF650	6500 (255.9)	2835 (111.6)	7113 (280.8)	7176 (282.5)	7685 (302.5)	2227 (87.7)	2164 (85.2)	1655 (65.2)	1848 (72.7)	3	3	750 (1550)	800 (1650)	900 (1870)
TF700	7000 (275.6)	3035 (119.5)	7613 (299.7)	7676 (302.2)	8185 (322.2)	2427 (95.6)	2364 (93.1)	1855 (73.0)	2048 (80.6)	3	3	550 (1100)	600 (1210)	700 (1430)

Load Capacity



Dimension



Specification

Description		Unit	HLF20C-5	HLF25C-5	HLF30C-5		
PERFORMANCE	Load Capacity	kg (lb)	2,000(4,000)	2,500(5,000)	3,000(6,000)		
	Load Center	mm (in)	500(24)	500(24)	500(24)		
	Fork	Lifting Speed	Load	mm/sec(fpm)	560(110.2)	540(106.3)	480(94.5)
			Unload	mm/sec(fpm)	650(128)	650(128)	600(118.1)
		Lowering Speed	Load	mm/sec(fpm)	510(100.4)	510(100.4)	510(100.4)
			Unload	mm/sec(fpm)	460(90.6)	460(90.6)	460(90.6)
	L x W x T		mm (in)	1,050 x 100 x 45(41.3 x 3.9 x 1.8)	1,050 x 100 x 45(41.3 x 3.9 x 1.8)	1,050 x 125 x 45(41.3 x 4.9 x 1.8)	
	Body	Travel Speed(Unloaded)	km/hr (mph)	16.8(10.4)	16.8(10.4)	16.7(10.4)	
		Gradeability	%(deg)	38.5(21.1)	32.6(18.1)	27.3(15.3)	
		90 ° Intersection	mm (in)	1,750(68.9)	1,786(70.3)	1,860(73.2)	
90 ° Staking		mm (in)	2,484(97.8)	2,520(99.2)	2,567(101.1)		
Weight (Unloaded)	kg(lb)	3,491(7,696)	3,871(8,534)	4,372(9,639)			
DIMENSION	A Max. Lifting Height	mm (in)	3,300(130)	3,300(130)	3,300(130)		
	B Free Lifting Height	mm (in)	115(4.5)	115(4.5)	115(4.5)		
	C Tilting (Forward)	deg	6	6	6		
	C' Tilting (Backward)	deg	10	10	10		
	D Max. Height	mm (in)	4,485(176.6)	4,485(176.6)	4,485(176.6)		
	E Min. Height	mm (in)	2,135(84.1)	2,135(84.1)	2,135(84.1)		
	F Outside Turning Radius Min.	mm (in)	2,038(80.2)	2,074(81.7)	2,116(83.3)		
	G Overall Length to fork face	mm (in)	2,250(88.6)	2,310(90.9)	2,355(92.7)		
	H Overall Width	mm (in)	1,065(41.9)	1,065(41.9)	1,110(43.7)		
	I Overhead Guard Height	mm (in)	2,100(82.7)	2,100(82.7)	2,100(82.7)		
	J Ground Clearance	At lowest point	mm (in)	90(3.5)	90(3.5)	90(3.5)	
		Center of wheel base	mm (in)	122(4.8)	122(4.8)	122(4.8)	
	K Wheel Base	mm (in)	1,400(55.1)	1,400(55.1)	1,400(55.1)		
	L Wheel Tread - Front	mm (in)	890(35)	890(35)	905(35.6)		
M Wheel Tread - Rear	-	910(35.8)	910(35.8)	910(35.8)			
ENGINE	Model	ps/rpm(kW/rpm)	Mitsubishi 4G64-33HL	Mitsubishi 4G64-33HL	Mitsubishi 4G64-33HL		
	Rated Power	kgf·m/rpm(lbf·ft/rpm)	50(2,500(37)	50(2,500(37)	50(2,500(37)		
	Max. Engine Torque	cc(cu-in)	17.0(1,600(123)	17.0(1,600(123)	17.0(1,600(123)		
	Displacement	-	2,350(143.3)	2,350(143)	2,350(143)		
TIRE	Front - Drive	-	21 x 7 x 15	21 x 7 x 15	21 x 8 x 15		
	Rear - Load	-	16 x 6 x 10 1/2	16 x 6 x 10 1/2	16 x 6 x 10 1/2		